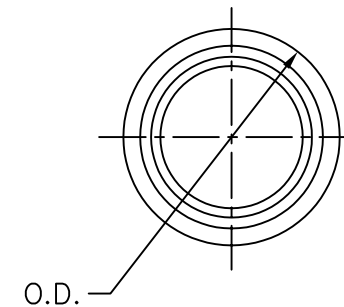
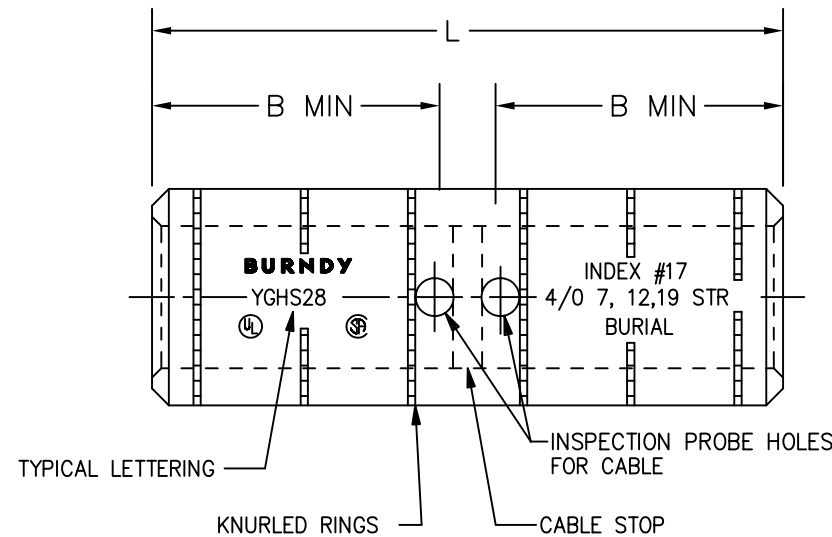


DRAWING NO.
SD82513

CATALOG NUMBER	COPPER CONDUCTOR		DIMENSIONS IN/mm			INSTALLATION DATA		
	SIZE	STR.	B MIN.	L APPROX.	O.D.	DIE INDEX NO.	HYPRESS™ Y35/Y39/Y45/Y46/Y750	NO. OF CRIMPS PER END
YGHS2C	#2 (.292 DIA) [35mm ² (7.6mm DIA)]	7	.75 [19]	1.73 [44]	.50 [13]	11	U1CRT	1
YGHS25	1/0 (.372 DIA) [50mm ² (9.4mm DIA)]	7, 19	.83 [21]	1.89 [48]	.63 [16]	14	U27RT	1
YGHS26	2/0 (.420 DIA) [70mm ² (10.9mm DIA)]	7, 19, 37	.83 [21]	1.89 [48]	.71 [18]	15	U28RT	1
YGHS27	3/0 (.470 DIA) [70mm ² (11.9mm DIA)]	7, 19	1.18 [30]	2.59 [66]	.79 [20]	16	U29RT	2
YGHS28	4/0 (.528 DIA) [95mm ² (12.5mm DIA)]	7, 12, 19	1.18 [30]	2.59 [66]	.89 [23]	17	U30RT	2
YGHS29	250 kcmil (.575 DIA) [120mm ² (14.4mm DIA)]	19, 37	1.18 [30]	2.59 [66]	.95 [24]	18	U31RT	2
YGHS31	350 kcmil (.710 DIA.) [185mm ² (17.8mm DIA)]	12, 19, 37	1.18 [30]	2.59 [66]	1.17 [30]	20	U34RT	2
YGHS34	500 kcmil (.813 DIA) [240mm ² (20.4mm DIA)]	19, 37	1.48 [38]	3.19 [81]	1.24 [32]	22	U36RT	3

REV.	DATE	DESCRIPTION	ECO	BY	C'K'D.
12	4/1/98	UPDATED NOTES 4 & 8, ADDED CAT. NO. YGHS27 TO TABLE	4135	DB	BM



NOTES:

- MATERIAL: COPPER
- BARRELS IS PREFILLED WITH PENETROX™ "E" AND INDIVIDUALLY SEALED.
- WHERE A "U" OR "PU" IS RECOMMENDED WITH THE Y45 HYPRESS,™ A PT6515 ADAPTER MUST BE USED.
- WHERE A "U" OR "PU" IS RECOMMENDED WITH THE Y46 HYPRESS,™ A PUADP-1 ADAPTER MUST BE USED.
- UL467 LISTED.
- LISTED UNDER UL486A FOR COPPER WIRE CONNECTORS.
- SUITABLE FOR DIRECT BURIAL IN EARTH OR CONCRETE.
- DIMENSIONS IN BRACKETS [] ARE IN MILLIMETERS, ROUNDED OFF TO THE NEAREST MILLIMETER UNLESS OTHERWISE NOTED. METRIC DIMENSIONS ARE FOR REFERENCE ONLY.

TO ORDER BURNDY PRODUCTS CALL 1-800-346-4175 MANCHESTER, NH 03109, USA FOR PRODUCT INFO = http://www.fciconnect.com	
HYLINK™ HEAVY DUTY, GROUND	
ITEM NO: N/A	
CAT NO: HGHS---- (TABLE)	
SCALE: N/A	
DRAWN BY: C RACCANO	11/21/78
CHECKER: CAR	11/21/78
DSN APPVL: ESR	11/21/78
MFG APPVL: ---	---
QC APPVL: A LLOYD	8/18/82
MKT APPVL: T NELSON	9/10/92
PROD FAM: ---	---
PROJECT #: ---	---
DOCUMENT TYPE: Sales	---
REL LEVEL: AutoCAD	---

BURNDY

DRAWING NO	SD82513
REV	12
SHEET 1 OF 1	